

Performance Report for: <https://www.sfphysique.fr/>

Report generated: Mon, Nov 10, 2025 6:55 AM -0800
 Test Server Location: London, UK
 Using: Chrome 125.0.0.0, Lighthouse 12.3.0

A	Performance	Structure	L. Contentful Paint	T. Blocking Time	C. Layout Shift
	100%	94%	508ms	0ms	0

Top Issues

Med-Low	Use a Content Delivery Network (CDN)	24 resources found
Med-Low	Serve static assets with an efficient cache policy	Potential savings of 36B
Med-Low	Avoid CSS @import <small>FCP LCP</small>	1 resource found
Low	Reduce JavaScript execution time <small>TBT</small>	112ms spent executing JavaScript
Low	Avoid chaining critical requests <small>FCP LCP</small>	10 chains found

Focus on these audits first

These audits likely have the largest impact on your page performance.

Structure audits do not directly affect your Performance Score, but improving the audits seen here can help as a starting point for overall performance gains.

Page Details



Total Page Size - 1.46MB



Total Page Requests - 45



■ HTML
 ■ JS
 ■ CSS
 ■ IMG
 ■ Video
 ■ Font
 ■ Other

How does this affect me?

Modern web users have a short attention span and expect a fast and seamless website experience. Delivering that fast experience can result in more traffic, more conversions, and more happiness.

As if you didn't need more incentive, **Google use Page Speed and Page Experience (including Web Vitals) signals in their ranking algorithm.**

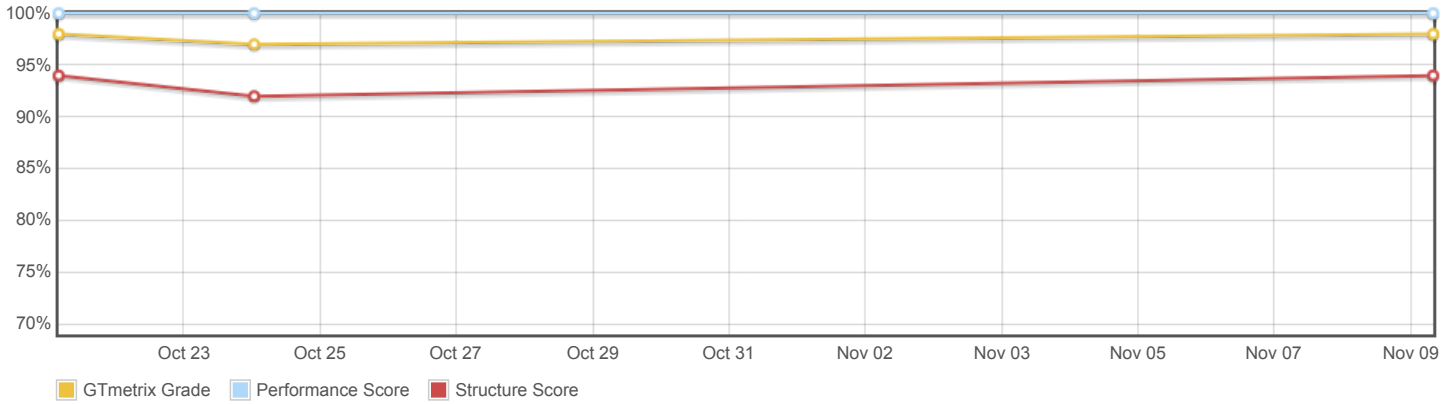
About GTmetrix



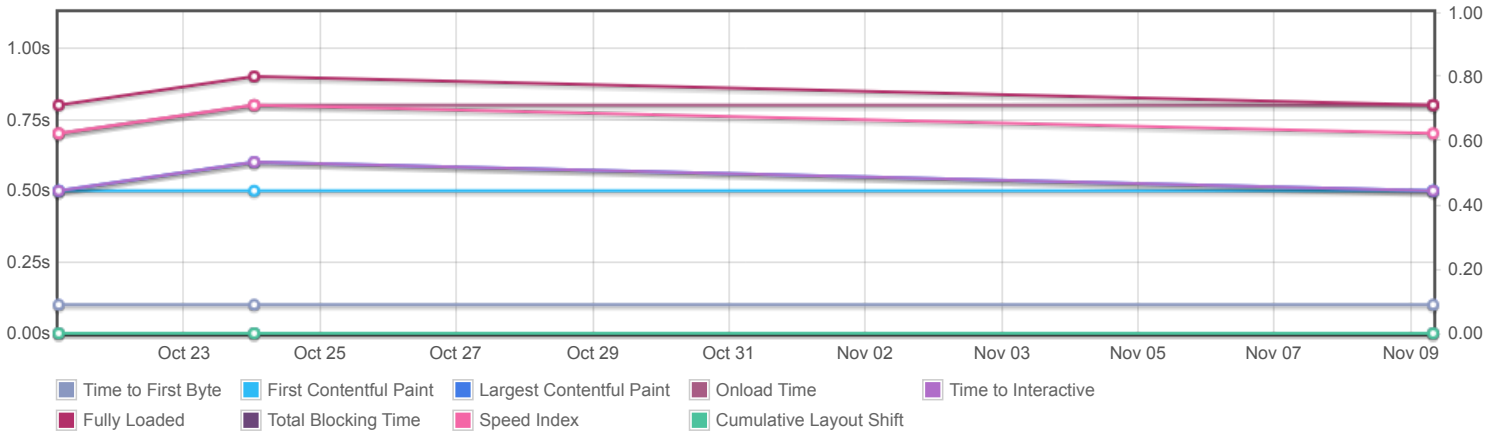
GTmetrix was developed as a tool for customers to easily test the performance of their webpages.

[Learn more about us.](#)

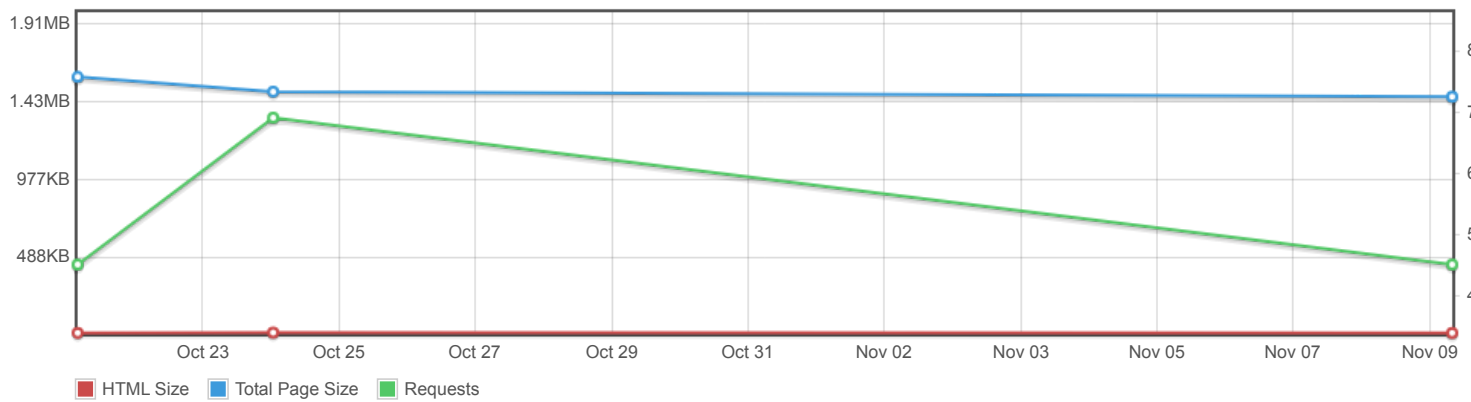
Page scores



Page metrics

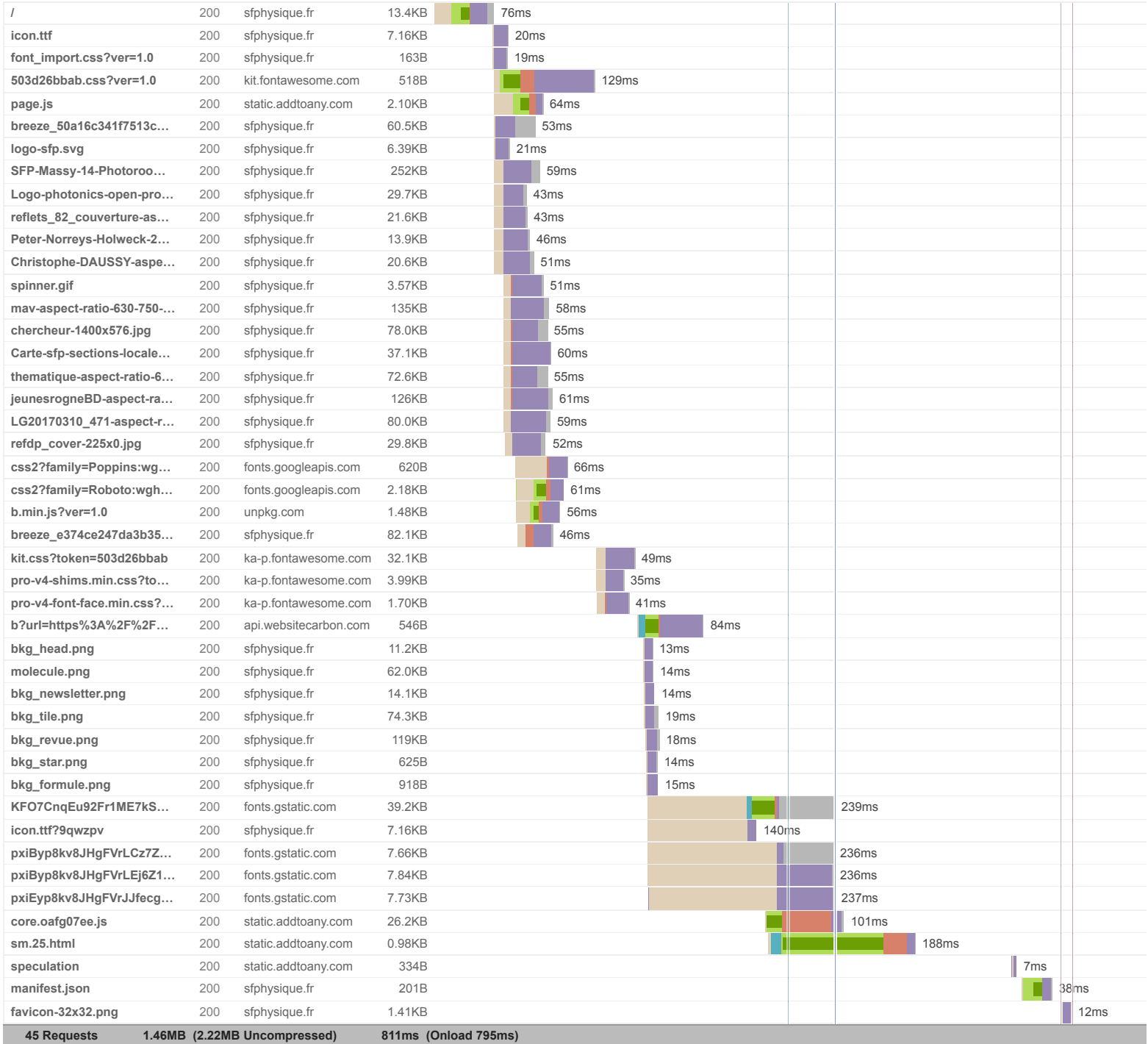


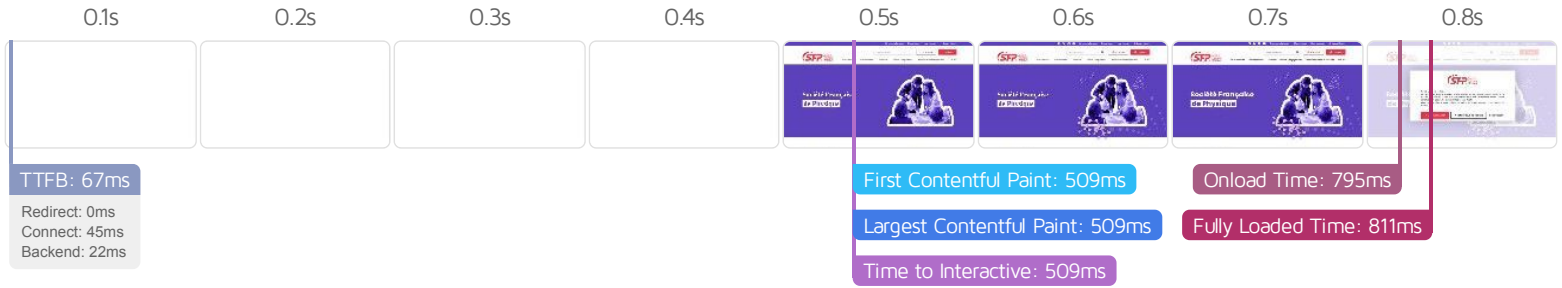
Page sizes and request counts



The waterfall chart displays the loading behaviour of your site in your selected browser. It can be used to discover simple issues such as 404's or more complex issues such as external resources blocking page rendering.

Société Française de Physique





Performance Metrics

<p>First Contentful Paint</p> <p>How quickly content like text or images are painted onto your page. A good user experience is 0.9s or less.</p>	<p>Good - Nothing to do here</p> <p>508ms</p>	<p>Time to Interactive</p> <p>How long it takes for your page to become fully interactive. A good user experience is 2.5s or less.</p>	<p>Good - Nothing to do here</p> <p>508ms</p>
<p>Speed Index</p> <p>How quickly the contents of your page are visibly populated. A good user experience is 1.3s or less.</p>	<p>Good - Nothing to do here</p> <p>739ms</p>	<p>Total Blocking Time</p> <p>How much time is blocked by scripts during your page loading process. A good user experience is 150ms or less.</p>	<p>Good - Nothing to do here</p> <p>0ms</p>
<p>Largest Contentful Paint</p> <p>How long it takes for the largest element of content (i.e., a hero image) to be painted on your page. A good user experience is 1.2s or less.</p>	<p>Good - Nothing to do here</p> <p>508ms</p>	<p>Cumulative Layout Shift</p> <p>How much your page's layout shifts as it loads. A good user experience is a score of 0.1 or less.</p>	<p>Good - Nothing to do here</p> <p>0</p>

Browser Timings

Redirect	0ms	Connect	45ms	Backend	22ms
TTFB	67ms	DOM Int.	418ms	DOM Loaded	448ms
First Paint	509ms	Onload	795ms	Fully Loaded	811ms

IMPACT	AUDIT	
Med-Low	Use a Content Delivery Network (CDN)	24 resources found
Med-Low	Serve static assets with an efficient cache policy	Potential savings of 36B
Med-Low	Avoid CSS @import FCP LCP	1 resource found
Low	Reduce JavaScript execution time TBT	112ms spent executing JavaScript
Low	Avoid chaining critical requests FCP LCP	10 chains found
Low	Avoid an excessive DOM size TBT	814 elements
Low	Avoid long main-thread tasks TBT	2 long tasks found
Low	Serve images in next-gen formats	Potential savings of 756KB
Low	Defer offscreen images	Potential savings of 680KB
Low	Avoid enormous network payloads LCP	Total size was 1.47MB
Low	Reduce unused CSS FCP LCP	Potential savings of 84.5KB
Low	Reduce unused JavaScript LCP	Potential savings of 68.9KB
Low	Efficiently encode images	Potential savings of 74.0KB
Low	Properly size images	Potential savings of 22.5KB
N/A	Largest Contentful Paint element LCP	510 ms
N/A	Avoid large layout shifts CLS	2 layout shifts found
N/A	Minimize main-thread work TBT	Main-thread busy for 566ms
N/A	Eliminate render-blocking resources FCP LCP	Potential savings of 4ms
N/A	Reduce initial server response time FCP LCP	Root document took 21ms
N/A	Reduce the impact of third-party code TBT	Total size was 136KB
N/A	Avoid serving legacy JavaScript to modern browsers TBT	
N/A	User Timing marks and measures	